

In Tune Tile

Nom De Style	Carreaux De Tapis
Collection	Collective
Numéro De Style	5T496
Construction	Boucle De Motif à Plusieurs Niveaux
Fibre	Ecosolution Q100™ Nylon
Méthode De Teinture	100% Teint EN Solution
Endos Primaire	Synthétique
Endos Secondaire	Ecworx® Tile
Traitements Protecteur	Protection Des Sols SSP® Shaw

	u.s.	metric
Dimensions Du Produit	9 in x 36 in	23 cm x 91 cm
Surface Par Carton	45 ft²	4.18 m²
Pièces Par Carton	20 pcs	
Jauge	1/12 in	47.2 per 10 cm
Compte De Mailles	8.5 per in	34.5 per 10 cm
Densité	6120 oz/yd³	0.226 g/cm³
Kilotex		9.69
Poids De La Fibre Touffetée	0.242 in	6.15 mm
Poids De La Fibre Touffetée	17 oz/yd²	576.4 g/m²



Méthodes d'Installation Conseillées



Spécifications Du Rendement + Tests Et Essai

Essai Au Panneau Radiant (Astm E648)	Class I
Densité Du Fumée	Less Than 450
Statique	Less Than 3.5 kv
Label Cri Green Label Plus (Glp)	GLP9968
Inflammabilité	Pass*
Ada Conformité	≥0.6, conforme au coefficient de frottement statique pour les surfaces de passage et d'accessibilité simplifiée (ADA).***

Test Reports may be included or listed by the manufacturing/inventory style number as opposed to the noted selling style number.

Garanties

Commerciale Limitée

Coordination Des Produits

Carpet Tile: **Collective I Tile, Collective II Tile, Collective III Tile, Collective IV Tile, Collective V Tile, Hand In Hand Tile, In Common Tile, Side By Side Tile, All Together Tile, Alongside Tile**

Attributs + Certifications

Certifications Below Apply Exclusively To The Carpet Tile Rug Itself And Not The Lokworx Tabs Adhesive

Health & Wellbeing

Material Ingredient Transparency	Cradle to Cradle Certified® Silver Level (Version 4.0) Health Product Declaration (HPD) Divulgarion De 1 000 ppm Living Building Challenge (LBC) Exempt De Produits Chimiques De La Liste Rouge Declare Conforme LBC NSF 140 or CRI Green Label Plus (GLP) GLP9968
Indoor Air Quality	

Climate Impact

Environmental Product Declaration (EPD)	Certifié Par Une Tierce Partie Conformément Aux Normes ISO 14044, ISO 14025 Et EN 15804
Embodied Carbon (Cradle to Gate)	4.55 kg CO₂/m²
Life-Cycle Carbon Emissions	Low Embodied Carbon
Total Recycled Content	58% (Pre-Consumer 58% Post-Consumer 0%)
Product Packaging	100% Recyclable

Global Product Assessment

	Singapore Green Label Agréé
	CE Marking (EN 14041) Certifié Par Un Tiers
	Environmental Guarantee* Re[turn] Reclamation Program* Through Our Environmental Guarantee, Shaw Pledges to Transport And Recycle Any Ecoworx Carpet.
	Country of Origin** Imported

Contribution Au Certificat Vert Leed

« Crédit MR : Divulgarion et optimisation des produits de construction	3rd Party Certified in Accordance with ISO14044, ISO14025 & EN15804
« Crédit MR : Divulgarion et optimisation des produits de construction	C2C Silver Level (Version 4.0) or HPD (Version 2.1)
« Crédit MR : Divulgarion et optimisation des produits de construction	C2C Silver Level (Version 4.0)
MR Credit: Building Product Disclosure and Optimization	Environmental Guarantee: Re[turn] Reclamation Program* Through Our Environmental Guarantee, Shaw Pledges to Transport And Recycle Any Ecoworx Carpet.
Sourcing of Raw Materials - Option 2: Leadership Extraction Practices	Green Label Plus Certification: GLP9968
Crédit EQ : matériaux faibles émissions	Ecoworx Tile with Lokdots Installation System
MR Credit: Interiors Life-Cycle Impact Reduction	
Option 3: Design for Flexibility	

Available Colorways



Include 50100



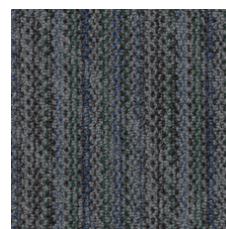
Together 50105



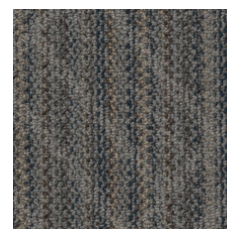
Together Color 50210



Link Color 50375



Unify Color 50485



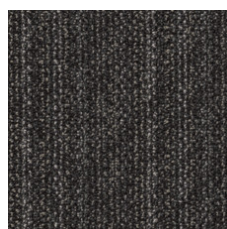
Combine 50486



Unify 50500



Connect 50505



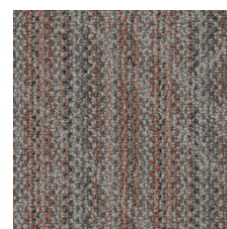
Embrace 50506



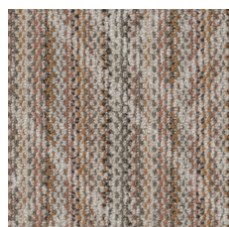
Merge 50518



Link 50580



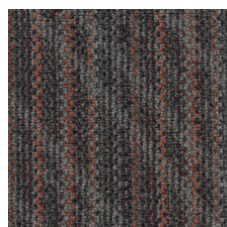
Merge Color 50675



Include Color 50678



Join 50761



Join Color 50865

Informations Supplémentaires

* To learn more about the recyclability of our products and our re[TURN], please visit shawcontract.com/sustainability.

**Meets or exceeds all local and national regulations in country of manufacture.

***This carpet is manufactured to be ADA compliant, but to be fully ADA compliant, the end-user must ensure the carpet is adhered to the floor and installed as outlined in the ADA standards.

[Installation Guidelines](#)

[Maintenance Guidelines](#)

Specifications are subject to nominal manufacturing variance. Material supply and/or manufacturing processes may necessitate changes without notice.

This product is an exclusive design and may not be duplicated in any manner. Use of this design in the creation of another product design is also strictly prohibited.

Visit shawcontract.com/testing for more information.



Declare.



PVC-Free

Corporate Headquarters +1 800 257 7429 | +1 706 532 7984 | Atlanta +1 404 853 7429 | Bengaluru +91 80 6773 0202 | Beijing +86 10 6568 588 | Chicago +1 312 467 1331 | Dubai +971 4 584 6956 | Hong Kong +852 2623 0371 | Latin America (Miami) +1 305 827 5912 | London +44 207 961 4120 | Los Angeles +1 800 233 1614 | Melbourne +61 3 9939 8543 | Mexico City +55 5010 7600 | Mumbai +91 22 6284 5050 | Nantong +86 400 800 7429 | New York +1 212 953 7429 | Paris +33 (0) 1 81 22 44 39 | San Francisco +1 415 955 1920 | Santiago +562 2431 5000 x 550 | São Paulo +55 11 3071 1702 | Shanghai +86 21 3338 4000 | Singapore +65 6733 1811 | Sydney +1 800 556 302